

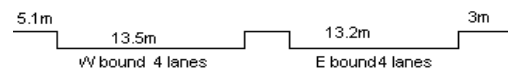
YEAR 2014

COVERAGE (B) STATION 2207

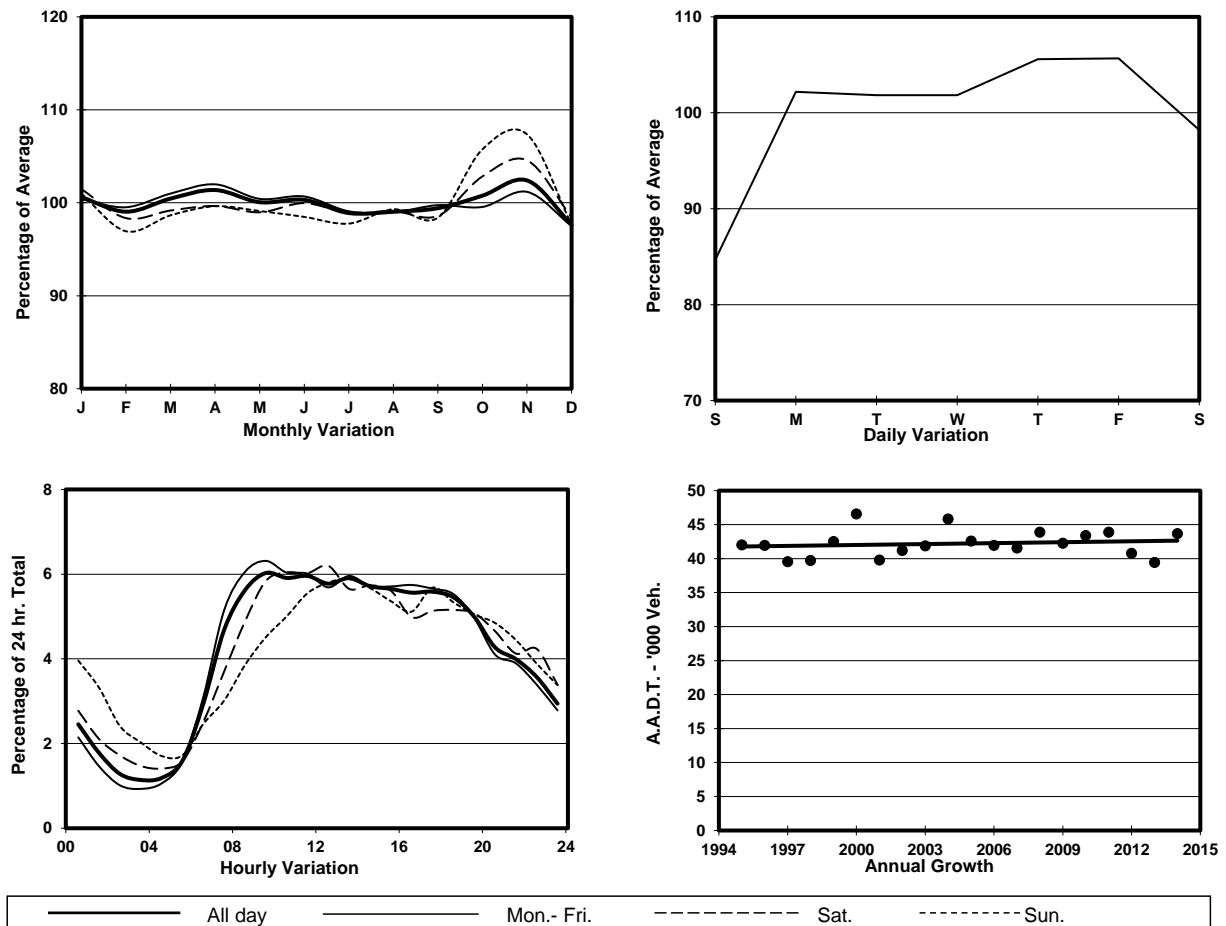
ROAD NETWORK MAJOR

ROAD TYPE PRIMARY DISTRIBUTOR

LINK CONNAUGHT RD C (from CLEVERLY ST to GILMAN ST)



1. TRAFFIC FLOW VARIATION AND GROWTH



2. TRAFFIC CHARACTERISTICS (BY DIRECTION)

Parameter	All - Day	Mon. - Fri.	Sat.	Sun.
EAST BOUND				
A.A.D.T.	26830	28050	26560	22560
R 12 / 24 - %	66	67.8	63.5	58.1
R 16 / 24 - %	82.9	84.3	81.1	76.5
AM Peak Hour	0900-1000	0700-0800	0900-1000	0900-1000
One-way flow at AM peak hour	1560	1760	1570	1030
T - % (AM)	-	30.8	-	-
PM Peak Hour	1700-1800	1600-1700	1800-1900	1700-1800
One-way flow at PM peak hour	1440	1530	1320	1250
T - % (PM)	-	14.1	-	-
Prop.of commercial vehicles - 16 hr.	-	15.7	-	-
WEST BOUND				
A.A.D.T.	16840	17480	16720	14720
R 12 / 24 - %	70.7	72.4	67.3	64.8
R 16 / 24 - %	87.5	88.6	86.1	82.9
AM Peak Hour	0900-1000	0900-1000	0900-1000	0900-1000
One-way flow at AM peak hour	1070	1190	960	650
T - % (AM)	-	11.4	-	-
PM Peak Hour	1600-1700	1600-1700	1700-1800	1800-1900
One-way flow at PM peak hour	1020	1080	920	870
T - % (PM)	-	10.7	-	-
Prop.of commercial vehicles - 16 hr.	-	11.3	-	-

3. OTHER INFORMATION AND COMMENT

4. Vehicle classification and occupancy - Monday to Friday

Time		Class of vehicle									
		Motor	Private	Taxi	Private	PLB	Goods veh.		Non	Fr. Bus	
		Cycle	Car		LB		Light	M & H	Fr. Bus	SD	DD
0700-0800	Pro	3.0	12.1	44.5	1.9	1.7	10.4	2.2	8.2	0.4	15.5
	Ocp	1.1	1.3	1.9	4.7	13.0	1.6	2.0	16.4	15.2	24.0
0800-0900	Pro	2.8	25.8	36.0	1.0	2.1	8.1	0.6	8.7	0.2	14.8
	Ocp	1.2	1.4	1.9	5.1	12.6	1.4	2.3	36.4	14.3	28.6
0900-1000 Peak hour	Pro	2.4	26.6	40.9	0.9	1.7	13.2	1.1	1.3	0.2	11.7
	Ocp	1.0	1.4	1.9	2.2	6.6	1.8	1.5	28.3	10.8	15.6
1000-1100	Pro	2.1	24.6	39.5	0.5	2.7	17.8	1.8	1.6	0.3	9.1
	Ocp	1.1	1.4	1.9	2.0	5.9	1.7	1.3	4.1	5.6	13.2
1100-1200	Pro	1.9	32.5	33.1	0.4	2.4	19.9	1.6	0.7	0.2	7.2
	Ocp	1.0	1.5	2.0	2.7	5.8	1.6	1.6	5.0	5.8	15.1
1200-1300	Pro	1.2	36.8	37.8	0.9	1.4	12.5	1.1	0.5	0.3	7.5
	Ocp	1.0	1.4	2.1	4.7	7.6	1.7	1.6	8.7	5.4	14.0
1300-1400	Pro	1.9	29.8	38.7	0.6	1.0	18.0	1.3	1.1	0.2	7.4
	Ocp	1.1	1.3	1.9	1.8	5.0	1.5	2.4	19.7	10.2	11.6
1400-1500	Pro	2.2	36.6	36.6	0.5	1.4	13.0	0.9	1.1	0.2	7.4
	Ocp	1.0	1.5	2.3	5.0	6.8	1.5	1.3	13.0	6.0	14.2
1500-1600	Pro	1.7	40.4	28.4	0.6	1.8	15.5	1.4	1.8	0.3	8.0
	Ocp	1.0	1.5	2.2	2.8	5.7	1.6	1.1	13.6	5.6	12.6
1600-1700	Pro	1.7	39.2	28.7	1.2	2.3	14.3	1.0	1.5	0.3	9.8
	Ocp	1.0	1.4	2.2	3.9	7.1	1.6	2.2	15.8	5.5	12.7
1700-1800	Pro	2.8	36.3	31.1	0.7	1.6	11.8	0.4	2.8	0.3	12.3
	Ocp	1.1	1.5	2.1	3.8	10.9	1.5	1.5	15.9	5.2	14.1
1800-1900	Pro	3.5	40.9	32.6	0.3	1.6	5.3	0.5	3.7	0.2	11.3
	Ocp	1.0	1.5	2.4	2.0	9.5	2.0	1.3	20.7	12.2	16.5
1900-2000	Pro	1.7	40.4	40.1	0.5	1.5	2.0	1.3	2.4	0.3	9.8
	Ocp	1.0	1.5	2.1	3.7	10.7	1.3	1.4	12.3	7.5	15.7
2000-2100	Pro	2.5	29.9	48.2	0.2	2.5	3.1	0.0	1.5	0.3	11.8
	Ocp	1.3	1.4	1.9	1.0	7.2	1.3	0.0	13.4	4.0	9.2
2100-2200	Pro	1.1	19.8	60.9	0.2	2.2	3.0	0.7	1.3	0.3	10.6
	Ocp	1.2	1.7	2.0	2.0	6.1	2.1	1.3	8.3	5.2	11.2
2200-2300	Pro	1.6	25.0	51.3	0.5	2.7	3.6	1.1	0.8	0.3	13.0
	Ocp	1.2	1.8	2.4	4.0	5.9	2.2	2.8	11.0	5.8	10.5
16 hours	Pro	2.1	31.8	38.3	0.7	1.9	11.3	1.1	2.4	0.3	10.2
	Ocp	1.1	1.5	2.1	3.6	7.7	1.6	1.7	20.8	7.6	15.7

Legend

Pro. Proportion of vehicles in % (Sum may not add up to 100% due to figure rounding)
Ocp. Average occupancy of vehicles
M&H Medium and Heavy